

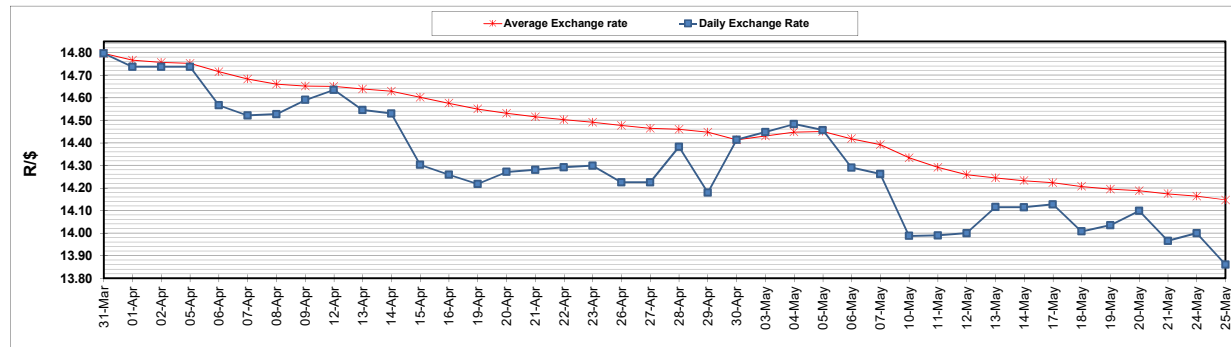
	PETROL 95 ULP	PETROL 93 ULP & LRP	DIESEL 0.05%	DIESEL 0.005%	ILL. PAR.
GAUTENG PUMP PRICE (SA c/l) AS FROM 05/05/2021	1,723.000	1,701.000	-	-	-
WHOLESALE PRICE (SA c/l) AS FROM 05/05/2021	-	-	1,446.620	1,450.020	857.488
SINGLE NATIONAL MAXIMUM RETAIL PRICE	-	-	-	-	1,076.000
BASIC FUEL PRICE - 25/05/2021 (SA c/l)	705.727	695.821	679.482	684.204	658.418
PRESS RELEASE CONTRIBUTION TO BFP 05/05/2021 - 25/05/2021 (SA c/l)	727.170	715.170	659.630	663.030	644.128
UNIT OVER/(UNDER) RECOVERY - 25/05/2021 (SA c/l)	21.443	19.349	(19.852)	(21.174)	(14.290)
AVERAGE BASIC FUEL PRICE 30/04/2021 - 25/05/2021	719.213	708.571	684.264	688.507	669.702
AVERAGE UNIT OVER/(UNDER) RECOVERY 30/04/2021 - 25/05/2021	9.457	8.099	(19.468)	(20.477)	(21.741)

ANALYSIS MOVEMENT OF AVERAGE OVER/(UNDER) RECOVERY

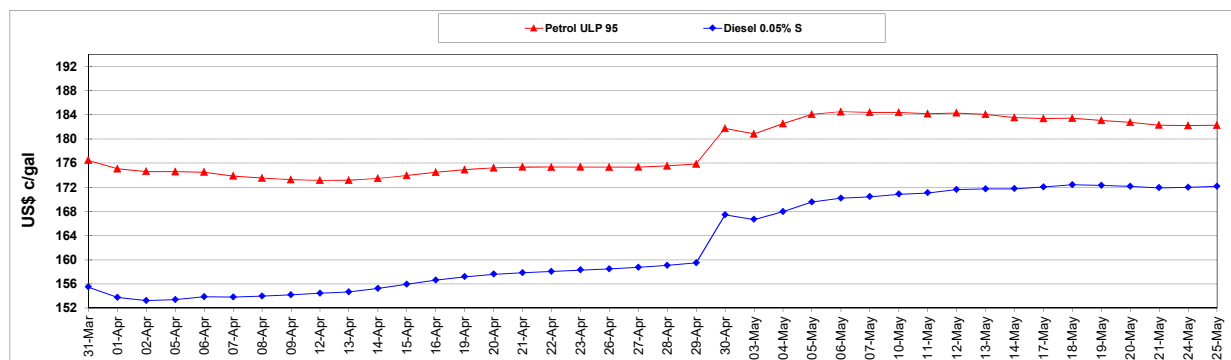
	PETROL 95	PETROL 93	DIESEL 0.05%	DIESEL 0.005%	ILL. PAR.
- MOVEMENT IN INTERNATIONAL PRODUCT PRICES	(5.819)	(6.951)	(34.001)	(35.101)	(35.966)
- MOVEMENT IN EXCHANGE RATE	15.276	15.050	14.534	14.624	14.225
AVERAGE UNIT OVER/(UNDER) RECOVERY 30/04/2021 - 25/05/2021	9.457	8.099	(19.468)	(20.477)	(21.741)

R/\$ EXCHANGE RATE - (R/\$13.8605- 25/05/2021)

EXCHANGE RATE USED IN BASIC FUEL PRICE



INTERNATIONAL PRODUCT PRICES OF BASKET USED IN BASIC FUEL PRICE



BASIC FUEL PRICE IN SA CENTS PER LITRE

